

Air quality sensors

SCD - SQD



Features:

- 3 sensors in one device
- 2 selectable type analog outputs
- Relay output for on/off control
- RS-485 Modbus interface
- PI for VAV or heater control

Air quality sensor

SCD and SQD air quality sensors are designed for air quality measurement and maintain. Simultaneous measurement of 3 air parameters is provided through relay, analog or digital interfaces.

PID control, if enabled, will maintain user set air quality, humidity or temperature level in the premises by directly controlling air damper position, fan intensity or air heater level by the relay or analog signal.

Sensor types

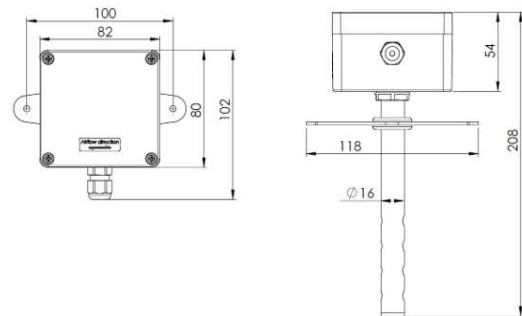
There are 2 sensor types depending on air quality sensor.

Sensor type	CO2	VOC	%RH	°C
SCD	+		+	+
SQD		+	+	+

Installation

The sensor is installed in the ventilation duct using the accompanying bracket, which must be attached by means of two screws. Sensor has to be mounted in such a way that the airflow passes 4 holes in the sensors tube.

Dimensions



Technical data

Ambient operating temp.	0..+50°C
Accuracy	CO2: ±5 % typical VOC: ±15 % %RH: ±3 %RH °C: ±1.0 °C
Case protection class	IP65
Dimensions	82x80x54 mm
Analog output	2x 0..10V / 2..10V / 0..20mA / 4..20mA with up to 20mA output current

CE SCD and SQD sensors conforms to the requirements of the EMC directive through standard EN 61326-1.